

# ICPH2019 KOBE

The 9<sup>th</sup> International Conference on  
Polyphenols and Health

Second Announcement

November 28 (Thu) – December 1 (Sun), 2019

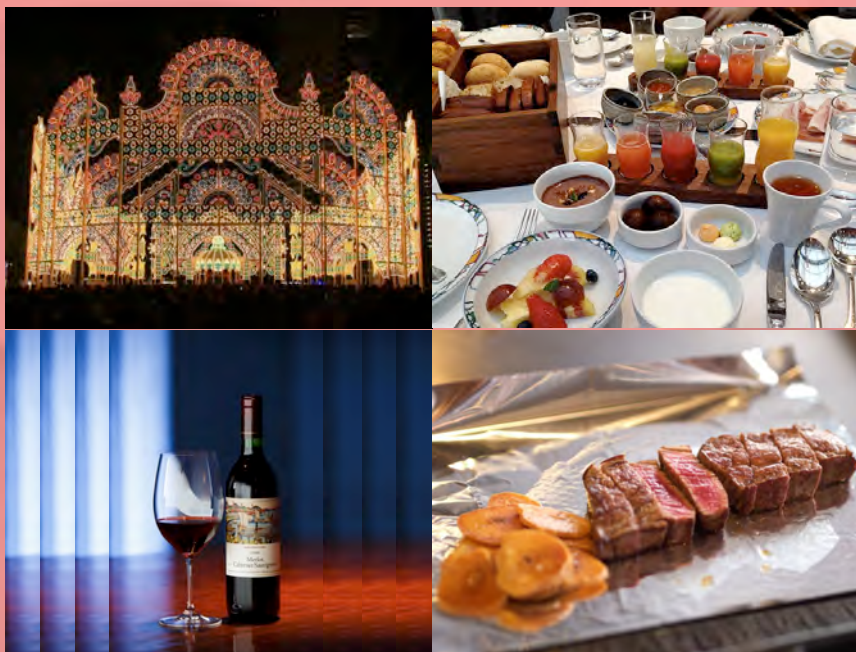
*Kobe International Conference Center*

*Kobe, JAPAN*

ICPH Presidents

Hitoshi Ashida (Kobe University)

Kayoko Shimoï (University of Shizuoka)



<http://icph2019.umin.jp/>

# ICoFF2019/ISNFF2019 KOBE

The 7<sup>th</sup> International Conference on Food Factors  
The 12<sup>th</sup> International Conference and Exhibition  
on Nutraceuticals and Functional Foods

Second Announcement

December 1 (Sun) – 5 (Thu), 2019

*Kobe International Conference Center*

*Kobe, JAPAN*

ICoFF2019 President

Hitoshi Ashida (Kobe University)

ISNFF2019 Local Conference President

Kenji Sato (Kyoto University)



<http://icoff2019.umin.jp/>



## Welcome to ICoFF2019/ISNFF2019 and ICPH2019!

We are delighted to invite you to the 7th International Conference on Food Factors (ICoFF2019), the 12th International Conference and Exhibition on Nutraceuticals and Functional Foods (ISNFF2019) and the 9th International Conference on Polyphenols and Health (ICPH2019).

With the mission of promoting research into all aspects of basic and applied Food and Nutritional Science, ICoFF held its first conference in 1995 and has continued to hold every four years. ICoFF is one of the largest international conferences for researchers, scientists, professors and students in the field of food factors and their health-promoting effects. ISNFF, founded in 2007, has been focusing on the research and development on materials that can be used as functional foods. ICPH has also become the most important international event to comprehensively deal with polyphenols and their various beneficial functions for health.

For ICoFF2019/ISNFF2019, we have adopted the theme, "Food Factor Science from Molecular to Human Studies". The conferences will offer opportunities to exchange scientific ideas and create networks between people from academia, industry and regulatory authorities, as well as between young and established scientists and professionals.

For ICPH2019, we have proposed the theme "Basic and Human Studies to Reach Our Goal" for this conference. Polyphenol research area continues to grow, and scientists have the responsibility to combine the basic study and the clinical trials and to contribute to human health promotion. To reach this goal, we propose the topics as essential to the symposia.

The organizing committee, mainly comprising members of the Japanese Society for Food Factors (JSOFF), is putting its utmost efforts into preparing for the conferences, which will be held at the Kobe Convention Center and the nearby Kobe Portopia Hotel on Port Island, Kobe. Other academic societies such as Japanese Society of Polyphenols, the International Union of Food Science and Technology (IUFOST) Japan, and Japanese Society of Catechinology and sponsor companies will agree to cooperate on ICoFF2019/ISNFF2019/ICPH2019.

We welcome your participation in ICPH2019 and ICoFF2019/ISNFF2019 and very much look forward to welcoming all of you to our wonderful city.



**Kayoko Shimoi**  
President  
ICPH2019



**Hitoshi Ashida**  
President  
ICoFF2019/ICPH2019



**Kenji Sato**  
Local Conference President  
ISNFF2019

## Focusing Area

### ICoFF2019/ISNFF2019

#### Food Factor Science from Molecular to Human Studies

##### 1) Sources & Product

- WASHOKU-Traditional Japanese Cuisine
- Fermented Foods and Beverages
- Fruits and Vegetables
- Herbs and Spices
- Marine Products
- Tea, Coffee and Cocoa
- Soy and Legumes
- Others

##### 2) Food Factors

- Human Studies of Food Factors
- Bioactive Amino Acids and Peptides
- Functional Carbohydrates
- Functional Lipids
- Carotenoids and Xanthophylls
- Natural Pigments
- Polyphenols
- Sulfur Compounds
- Probiotics and Prebiotics
- Vitamins
- Minerals
- Others

##### 3) Functions & Mechanisms

- Gastrointestinal Health and Diseases
- Anti-inflammation
- Allergy and Immune Modulation
- Metabolic Syndrome, Obesity and Diabetes
- Cardiovascular Health
- Bone Health
- Skin Health
- Brain Health
- Muscle Atrophy and Locomotive Syndrome
- Cancer Chemoprevention
- Nutritional Regulation of Epigenetics
- Antioxidant and Redox Regulation
- Molecular Targets of Food Factors
- Chronobiology and Nutrition/Food
- Exosome and MicroRNA
- Autophagy
- Hormesis
- Others

##### Others

- Analytical Methods and Omics Technologies
- Biomarkers
- Epidemiology
- Taste and Olfaction
- R&D of Functional Foods and Nutraceuticals

### ICPH2019

#### Basic and Human Studies to Reach Our Goal

- Bioavailability and Metabolism
- Biomarkers: Analytical Methods and Usability
- Molecular Targets
- Target Tissues, Brain-gut-axis and Microflora
- Disease Prevention:
  - Aging, Cancer, Cardiovascular Disease, Metabolic Syndrome, Obesity, Diabetes
- Health Promotion
- Sports and Athletic Performance
- Polyphenols in Japanese and Asian Foods
- Learning from Non-polyphenol Compounds

## Oversea Advisory Board Members

Cristina Andres-Lacueva (Univ. Barcelona, Spain)  
 Sue-Joan Chang (National Cheng Kung Univ., Taiwan)  
 Kevin D. Croft (Univ. Western Australia, Australia)  
 Cesar G. Fraga (Univ. California, USA, Univ. of Buenos Aires, Argentine)  
 Chi-Tang Ho (Rutgers Univ., USA)  
 Lucy Sun Hwang (National Taiwan Univ., Taiwan)  
 Pingfan Rao (Zhejiang Gongshang Univ., China)  
 Fereidoon Shahidi (Memorial Univ. Newfoundland, Canada)  
 Young-Joon Surh (Seoul National Univ., Korea)  
 Francisco Tomas-Barberan (CEBAS-CSICMurcia, Spain)  
 Chin-Kun Wang (Chung Shan Med. Univ., Taiwan)  
 Gary Williamson (Univ. Leeds, UK)  
 Chung S. Yang (Rutgers Univ., USA)  
 Suk Hoo Yoon (Woosuk Univ., Korea)

## Domestic Advisory Board Members

Keiko Abe (Univ. Tokyo, Japan)  
 Soichi Arai (Univ. Tokyo, Tokyo Univ. Agric., Japan)  
 Toyohiko Ariga (Nihon Univ., Japan)  
 Hiroshi Hara (Hokkaido Univ., Japan)  
 Hiroshige Itakura (Ibaraki Christian Univ., Japan)  
 Takahiro Inakuma (Tezukayama Univ., Japan)  
 Shuichi Kaminogawa (Univ. Tokyo, Japan)  
 Kazuki Kanazawa (Kibi Int. Univ., Japan)  
 Kazuo Kondo (Toyo Univ., Japan)  
 Kikue Kubota (Ochanomizu Univ., Japan)  
 Misao Miwa (Univ. Human Arts Sci., Japan)  
 Kazuo Miyashita (Hokkaido Univ., Japan)  
 Teruo Miyazawa (Tohoku Univ., Japan)  
 Nobuji Nakatani (Osaka City Univ., Japan)  
 Tsutomu Nakayama (Tokyo Univ. Agric., Japan)  
 Hajime Ohigashi (Kyoto Univ., Fukui Pref. Univ., Japan)  
 Toshihiko Osawa (Aichi Gakuin Univ., Japan)  
 Toshiyuki Sakai (Kyoto Pref. Univ. Med., Japan)  
 Ryuichiro Sato (Univ. Tokyo, Japan)  
 Shigeru Shigeoka (Kindai Univ., Japan)  
 Tadakatsu Shimamura (Showa Univ., Japan)  
 Makoto Shimizu (Tokyo Univ. Agric., Japan)  
 Yoshiharu Shimomura (Nagoya Univ., Japan)  
 Junji Terao (Konan Women's Univ., Japan)  
 Tojiro Tsushida (Miyagi Univ., Japan)  
 Kazunori Utsunomiya (Jikei Univ. Med., Japan)  
 Akimori Wada (Kobe Pharm. Univ., Japan)  
 Shaw Watanabe (Life Science Promoting Association, Japan)  
 Shizuo Yamada (Univ. Shizuoka, Japan)  
 Kazunaga Yazawa (Waseda Univ., Japan)  
 Toshikazu Yoshikawa (Louis Pasteur Center Med. Res., Japan)

## Invited Speakers (Tentative)

Rotimi E. Aluko (Univ. Manitoba, Canada)  
 Cesarettin Alasalvar (TÜBİTAK MAM, Turkey)  
 Yves Desjardins (Laval Univ., Canada)  
 Zigang Dong (Univ. Minnesota, USA)  
 Amin Bin Ismail (Univ. Putra Malaysia, Malaysia)  
 Bo Jiang (Jiangnan Univ., China)  
 Hisanori Kato (Univ. Tokyo, Japan)  
 Paul A. Kroon (Inst. Food Res., UK)  
 Joshua D. Lambert (Pennsylvania State Univ., USA)  
 Mari Maeda-Yamamoto (NARO, Japan)  
 Claudin Manach (INRA Clermont-Ferrand, France)  
 Yoshinori Mine (Univ. Guelph, Canada)  
 Alyson E. Mitchell (Univ. California Davis, USA)  
 Sayuri Miyamoto (Univ. São Paulo, Brazil)  
 Christine Morand (INRA-Clermont-Ferrand, France)  
 Yuji Naito (Kyoto Pref. Univ. Med., Japan)  
 Patricia Oteiza (Univ. California, USA)  
 Jung H.Y. Park (Hallym Univ., Korea)  
 Mariusz K. Piskula (Polish Acad. Sci., Poland)  
 Toshiyuki Sakaki (Toyama Pref. Univ., Japan)  
 Yoshiharu Shimomura (Nagoya Univ., Japan)  
 Jeremy Spencer (Univ. Reading, UK)  
 Shinya Toyokuni (Nagoya Univ., Japan)  
 Gow-Chin Yen (National Chung Hsing Univ., Taiwan)  
 Hiroshi Yoshida (Jikei Univ. Med., Japan)

## Program at a Glance

|         | ICPH2019                 |                 |                            |                 |                            |                                    | ICoFF2019/ISNFF2019 |                  |                            |                  |                            |                        |                            |                      |
|---------|--------------------------|-----------------|----------------------------|-----------------|----------------------------|------------------------------------|---------------------|------------------|----------------------------|------------------|----------------------------|------------------------|----------------------------|----------------------|
|         | 28-Nov                   | 29-Nov          |                            | 30-Nov          |                            | 1-Dec                              |                     | 2-Dec            |                            | 3-Dec            |                            | 4-Dec                  |                            | 5-Dec                |
| AM      |                          | Plenary Lecture |                            | Plenary Lecture |                            | Plenary Lecture                    |                     | Plenary Lecture  |                            | Plenary Lecture  |                            | Plenary Lecture        |                            | Plenary Lecture      |
|         |                          | Symposium       |                            | Symposium       |                            | Symposium                          | Exhibition          | Symposium        |                            | Symposium        |                            | Symposium              |                            | Symposium            |
|         |                          |                 |                            |                 |                            | ICPH Closing                       |                     |                  |                            |                  |                            |                        |                            |                      |
| PM      |                          | Lunch           | Exhibition/ Poster Viewing | Lunch           | Exhibition/ Poster Viewing | Lunch                              |                     | Luncheon Seminar | Exhibition/ Poster Viewing | Luncheon Seminar | Exhibition/ Poster Viewing | Luncheon Seminar       | Exhibition/ Poster Viewing | ICoFF/ ISNFF Closing |
|         |                          |                 |                            |                 |                            | ICoFF/ ICPH/ ISNFF Joint Symposium |                     |                  |                            |                  |                            |                        |                            |                      |
|         | ICPH Opening             | Symposium       |                            | Symposium       |                            | ICoFF/ ISNFF Opening               |                     | Symposium        |                            | Symposium        |                            | Symposium              |                            |                      |
|         | Opening Lecture          |                 |                            |                 |                            |                                    |                     |                  |                            |                  |                            |                        |                            |                      |
| EVENING |                          |                 | Poster Session             |                 | Poster Session             | Welcome Reception (ICoFF/ ISNFF)   |                     |                  | Poster Session             |                  | Poster Session             |                        | Poster Session             |                      |
|         | Welcome Reception (ICPH) |                 |                            | Banquet (ICPH)  |                            |                                    |                     |                  |                            | Kobe Night       |                            | Banquet (ICoFF/ ISNFF) |                            |                      |



## Important Dates

Registration/abstract submission opens: Mar. 1, 2019

Early-bird registration deadline: Aug. 1, 2019

Abstract submission deadline: Jun. 30, 2019

Regular registration deadline: Oct. 31, 2019

## Conference Fees

### ICPH (Nov. 28 - Dec. 1)

|                    |            |
|--------------------|------------|
| Early-bird Regular | 45,000 JPY |
| Regular            | 55,000 JPY |
| Early-bird Student | 25,000 JPY |
| Student            | 30,000 JPY |

### ICoFF/ISNFF (Dec. 1 - Dec. 5)

|                    |            |
|--------------------|------------|
| Early-bird Regular | 55,000 JPY |
| Regular            | 65,000 JPY |
| Early-bird Student | 30,000 JPY |
| Student            | 35,000 JPY |

### ICPH/ICoFF/ISNFF (Nov. 28 -Dec. 5)

|                    |            |
|--------------------|------------|
| Early-bird Regular | 80,000 JPY |
| Early-bird Student | 40,000 JPY |

**\*Early-bird: Before Aug. 1, 2019**



## Chairs of the Organizing Committee

|                                  |  |
|----------------------------------|--|
| ICoFF/ISNFF/ICPH President       | Hitoshi Ashida (Kobe Univ.)  |
| ISNFF Local Conference President | Kenji Sato (Kyoto Univ.)   |
| ICoFF/ISNFF Vice Presidents      | Akira Murakami (Univ. Hyogo)<br>Taiichiro Seki (Nihon Univ.)   |
| ICoFF/ISNFF Secretary General    | Yoshimasa Nakamura (Okayama Univ.)   |
| ICPH President                   | Kayoko Shimoi (Univ. Shizuoka)   |
| ICPH Vice Presidents             | Mariko Uehara (Tokyo Univ. Agric.)<br>Naomi Osakabe (Shibaura Inst. Tech.)<br>Yoshimasa Nakamura (Okayama Univ.) |
| ICPH Secretary General           | Kaeko Murota (Shimane Univ.)   |
| Fund Raising Committee           | Yuji Naito (Kyoto Pref. Univ. Med.)  |

## Secretariat Information

### ICoFF2019/ISNFF2019/ICPH2019 Registration Secretariat

c/o JTB Communication Design Inc., Meeting & Convention Business Unit

Umeda Daibiru 4F, 3-3-10, Umeda, Kitaku, Osaka 530-0001, Japan

Tel: +81-6-6348-1391, Fax: +81-6-6456-4105

E-mail: [icoff-icph2019@jtbcom.co.jp](mailto:icoff-icph2019@jtbcom.co.jp)

## Welcome to Kobe!

Kobe is located in the mid-west of Japan, a region known as Kansai. The city offers easy access for overseas visitors, with Kansai International Airport being the closest international gateway to Kobe. Shinkansen trains, popularly known as 'Bullet' trains, are easily accessible from Shin-Kobe Station and the journey from Tokyo, for example, only takes three hours.

The population of Kobe is a little over 1.5M (as of December, 2015), which makes it the 6th-largest city in Japan. Over 44,500 foreigners and more than 1,800 students from 117 countries, including China, South Korea, the U.S.A., and Vietnam, live here. With such an international background, the city has flourished as a key trading port in Japan. The average annual temperature is 17.3°C, with a range of -0.9°C to 36.0°C reported in 2015, while the annual rainfall was 1,500 mm, which means that it is generally very comfortable with a mild winter and a relatively cool summer for Japan, where the four seasons are quite distinct.

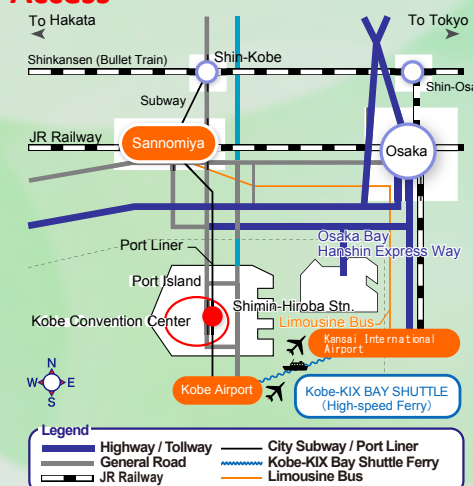
Kobe is known as a city with its own unique flavor and an exotic atmosphere, which has been influenced by the various foreign cultures it has attracted. The city is blessed with natural beauty including Mt. Rokko and the Seto Inland Sea. It is well known for its gourmet delights, such as Kobe Beef and confectionary, as well as Japanese sake and wine. It is also known as the fashion center of Japan, which gives the city a very sophisticated image. As a result, Kobe is one of the most popular cities for sightseeing in Japan with its many wonderful places to visit, not the least of which is Arima, one of Japan's oldest and most famous hot springs located in the north of the city.

## Map



<http://kobe-cc.jp/english/access/index.html>

## Access



**Conference Websites:** <http://icoff2019.umin.jp/> <http://icph2019.umin.jp/>